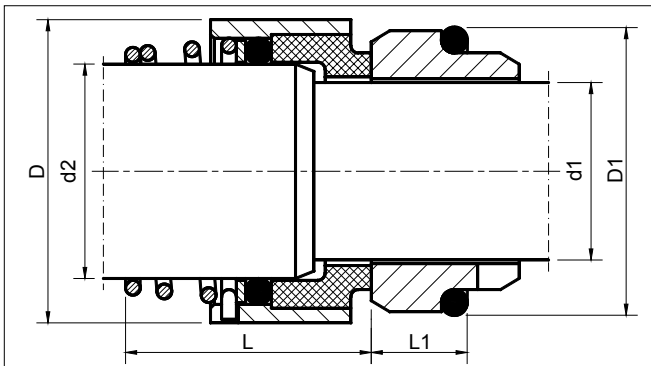
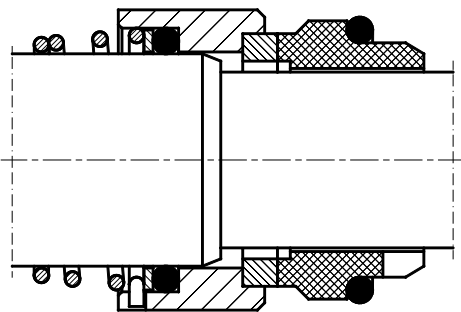


## YT 642/647

EQUIVALENTS OF BURGEMANN H12N SERIES



YT642: seal face with shrink-fitted carbon graphite



YT647: seal face with shrink-fitted silicon carbide



### Technical features

- Single seal
- Balanced
- Conical spring
- Uni-directional
- To DIN 24960
- Equivalent to Burgmann H12N/H17GN

### Operating limits

- $d_1 = 10 - 80$  mm
- $p_1 = 2.4$  MPa
- $t = -40 - 205$  °C
- $v_g = 15$  m/s

### Materials

- Seal faces: carbon graphite (resin-impreg.), silicon carbide
- Stationary seats: silicon carbide, alumina ceramic, carbon graphite (resin-impreg.), Cr-Mo steel
- Springs, face housings: AISI 316, 316Ti
- Secondary seals: NBR, FPM, EPDM

### Stationary seats

- G9 (to DIN 24960)

d1	d2	D	D1	L	L1
10	14	24	21	25.5	10.0
12	16	26	23	26.5	10.0
14	18	31	25	29.5	10.0
16	20	34	27	31.0	10.0
18	22	36	33	32.5	11.5
20	24	38	35	32.5	11.5
22	26	40	37	32.5	11.5
24	28	42	39	32.5	11.5
25	30	44	40	33.5	11.5
28	33	47	43	35.5	11.5
30	35	49	45	35.5	11.5
32	38	54	48	39.5	11.5
33	38	54	48	39.5	11.5
35	40	56	50	43.5	11.5
38	43	59	56	46.0	14.0
40	45	61	58	48.0	14.0
43	48	64	61	51.0	14.0
45	50	66	63	55.0	14.0
48	53	69	66	55.0	14.0
50	55	71	70	58.0	15.0
53	58	78	73	60.0	15.0
55	60	79	75	60.0	15.0
58	63	83	78	60.0	15.0
60	65	85	80	60.0	15.0
63	68	88	83	60.0	15.0
65	70	90	85	61.0	15.0
70	75	98	92	63.0	18.0
75	80	105	97	68.0	18.0
80	85	109	105	68.0	18.2

Dimensions in mm.